

# Biotinylated Human CD166 Protein; His-Avi Tag

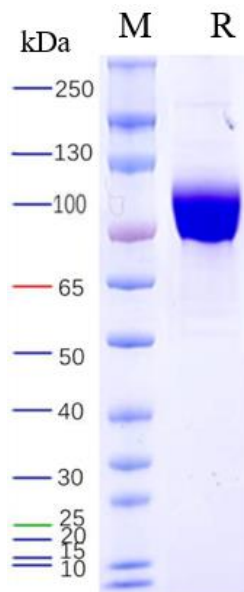
## Product Information

<b>Product Name</b>	Biotinylated Human CD166 Protein; His-Avi Tag
<b>Storage temp.</b>	Store at $\leq -70^{\circ}\text{C}$ , stable for 6 months after receipt. Recommend to aliquot the protein into smaller quantities for optimal storage. Please minimize freeze-thaw cycles.
<b>Catalog# / Size</b>	<b>GM-87263RP-25 / 25 <math>\mu\text{g}</math></b> <b>GM-87263RP-200 / 200 <math>\mu\text{g}</math></b>

## Protein Information

<b>Alternative Names</b>	ALCAM,CD6L,KG-CAM,MEMD
<b>Source</b>	Biotinylated Human CD166 Protein; His-Avi Tag (GM-87263RP) is expressed from human 293 cells (HEK-293). It contains AA Trp28-Ala526 (Accession # Q13740-1).  This protein carries a His-Avi tag at the C-terminus.
<b>Purity</b>	> 95% as determined by SDS-PAGE
<b>Endotoxin</b>	< 1 EU/ $\mu\text{g}$ , determined by LAL gel clotting assay
<b>Predicted Mol Mass</b>	57.4 KDa
<b>Formulation</b>	Supplied as a 0.2 $\mu\text{m}$ filtered solution of PBS, pH7.4.
<b>Description</b>	<p>CD166 protein, also known as ADR1, ALCAM, SC1, or MEMD, is a transmembrane protein belonging to the immunoglobulin superfamily. This protein plays an important role in cell adhesion molecules, primarily involved in biological processes such as cell-cell interactions, cell migration, and cell signaling.</p> <p>CD166 protein is primarily expressed in various cell types, including neurons, immune cells, epithelial cells, and tumor cells. CD166 protein plays essential roles in processes such as neuron development and axon guidance, immune cell activation and migration, epithelial cell adhesion and transformation, as well as tumor cell invasion and metastasis.</p> <p>Research has shown that CD166 protein interacts with various other cell surface proteins, including CD6, CD166 itself, L1, N-CAM, MoPhelin, tAbp2, CD58, and Act-1. These interactions are critical for regulating functions such as cell signaling, adhesion, and migration.</p>

## SDS-PAGE

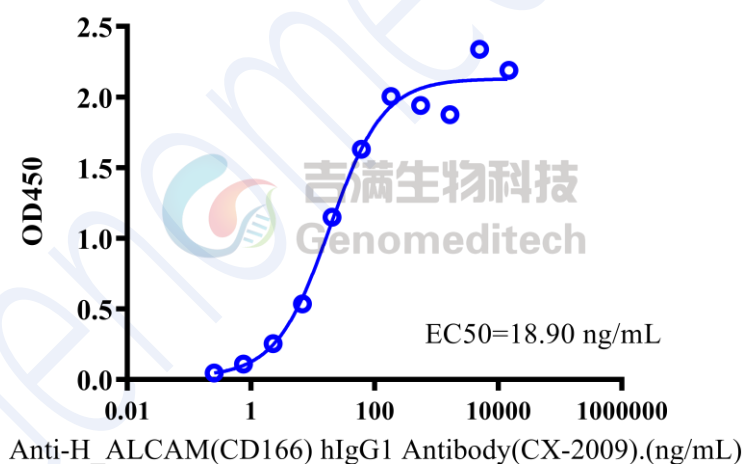


On SDS-PAGE under reducing (R) condition. The gel was stained overnight with Coomassie Blue. The purity of the protein is greater than 95%.

## Bioactivity-ELISA

### Bioactivity-ELISA

0.1  $\mu$ g Biotinylated Human CD166 Protein; His-Avi Tag of per well



Biotinylated Human CD166 Protein; His-Avi Tag (Catalog # GM-87263RP) was immobilized at 1  $\mu$ g/ml (100  $\mu$ L/well) on streptavidin precoated. Increasing concentrations of Anti-H\_ALCAM(CD166) hIgG1 Antibody (CX-2009) (Catalog # GM-87693AB) were added.